



The background of the cover features a collage of retail equipment. On the left, a tall metal rack is filled with numerous white plastic hangers. On the right, a clothing rack displays a variety of shirts in shades of pink, light blue, and teal. Below the shirts, a rolling cart holds several folded pairs of blue jeans. The entire scene is set in a brightly lit retail environment with white display cases and wooden shelving in the background. The bottom half of the cover is a solid dark blue area with a repeating pattern of the IRSG logo.

# PRODUCT CATALOG

Carts, Transporters  
& Rolling Racks



## Lingerie/Specialty Racks

CFR-100

The CFR-100 is designed to organize, transport, and stock small items in the most efficient method possible. Ideal for swimwear, intimates, children's wear, or for hanger collection/sortation. Attractive and "floor friendly" lacquered zinc finish. 4 adjustable hang bars included in price. Uprights feature 9 rows of durable nylon clips for optimum placement of hang-rail bars.

### Features:

- 4 hang bars included
- 20"W x 40"L x 66"H
- 4" swivel casters (non-marring)
- 4 hang bars included
- Attractive lacquered zinc finish
- Ships unassembled

Model #	D x W (in)	D x W (mm)	Overall Height (in) (mm)	
<b>CFR-100</b>	20 x 40	508 x 1016	66	1676

## Product Options

### Bumpers:

C-B3-K4 & C-B3-INS

3" non-marring, rotating bumper (set of 4 with bumper inserts). Use to protect doors, walls, fixtures and ankles!



### Hang Bar – LB

Additional hang bar for CFR-100. Length is 37". Constructed of 1" round zinc-finished steel with nylon end caps.



## Adjustable Hang Rail Rack

DRR-48-001

Versatile and durable, this lightweight rack features adjustable hang bars and a secure bottom shelf. Ideal for replenishment and recovery.

### Features:

- 19 1/2"W x 48"L x 60"H
- 3" swivel casters (non-marring)
- 4 – adjustable hang bars included
- 48" wire grid bottom shelf
- White powder coat finish
- 500 lb. load capacity
- Ships unassembled

Model #	D x W (in)	D x W (mm)	Overall Height (in) (mm)	
<b>DRR-48-001</b>	19.5 x 48	495 x 1219	60	1524



**EZ Rack**

The compact design, adjustability, durable construction, and attractive lacquered zinc finish makes the EZ Rack ideal for a host of on-floor and backroom applications. The top hang bar extends up to 72" to hold larger volumes of merchandise. Racks nest to save space when they are not in use.

**Features:**

- EZR-250KS includes 5" heavy-duty swivel casters (non-marring)
- EZR-250K2 upgrades 2 casters to total lock brake
- 40"L x 24"W x 56" – 73"H (adjustable)
- Attractive lacquered zinc finish
- 1,000 lb. load capacity
- Disassembles in seconds - no tools required
- Ships unassembled



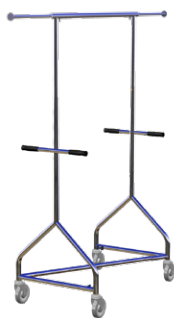
**EZR-250KS** w/ hang bar in lowered position and wire grid bottom shelf



**EZR-250KS** w/ extended top hang bar and middle bar in raised position and a wire grid bottom shelf



**Collapsed EZR-250KS**



**EZR-250KS**



**EZR-250K2**  
(Shown with optional middle bar and bottom grid shelf.)

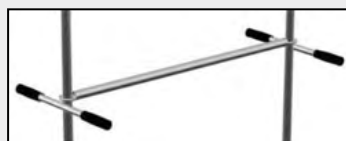
Model #	Width		Length (Base)		Overall Height		Description
	(in)	(mm)	(in)	(mm)	(in)	(mm)	
<b>EZR-250KS</b>	24	610	Adj. 40 - 72	Adj. 1016 - 1829	Adj. 56 - 73	Adj. 1422 - 1854	E-Z Rack w/ 4 swivel casters
<b>EZR-250K2</b>	24	610	Adj. 40 - 72	Adj. 1016 - 1829	Adj. 56 - 73	Adj. 1422 - 1854	E-Z Rack w/ 2 swivel/2 brake casters

**Product Options**



**Wire Grid Bottom Shelf**  
EZR-GS-LZ

Ideal for bulk/folded goods transport.



**Middle Bar**  
EZR-M-LZ

Middle hang bar adds capacity and versatility.



**3" Bumpers**  
C-B3-K4

3" bumper (non-marring, set of 4). Used to protect doors, walls, fixtures, and ankles!

## Fitting/Recovery Racks

These attractive, compact lacquered zinc racks are perfect for use in space-restricted areas such as fitting rooms, cash wraps or on-floor replenishment and are height adjustable.



**CSC-1T**  
Shown with C-B3-K4 set of optional bumpers



**CSC-1T-S12**  
Shown with C-B3-K4 set of optional bumpers



**CSC-1T-S**  
Shown with C-B3-K4 set of optional bumpers

### Features

- 20"W x 34"L footprint
- Adjustable height hang bar – 51", 57", 63", 69"
- 4" swivel casters (non-marring)
- Attractive lacquered zinc finish
- Ships unassembled

### Adjustable Rack Options

- **CSC-1T** – Features an adjustable height hang bar
- **CSC-1T-S** – Includes wire grid bottom shelf with 1" lip
- **CSC-1T-S12** – Includes 12" deep wire grid bottom basket

Model #	D x W (in)	D x W (mm)	Overall Height (in)	Overall Height (mm)	Description
<b>CSC-1T</b>	20 x 34	508 x 864	51 – 69	1295 – 1753	Adjustable Height Rack
<b>CSC-1T-S</b>	20 x 34	508 x 864	51 – 69	1295 – 1753	Adjustable Height Rack
<b>CSC-1T-S12</b>	20 x 34	508 x 864	51 – 69	1295 – 1753	Adjustable Height Rack



### Product Option:

3" Bumpers (non-marring)  
(Set of 4 Bumpers)

**Model #**

**C-B3-K4**



## Folding Salesfloor Rack – FSR

This popular rack is ideal for light transporting and display. Folds for storage when not in use.

- 22" W x 50 1/2" L
- Top bar adjusts easily to 56", 61" and 66"
- Adjustable height hang bar
- Top hang bar extends up to 74"
- 4" swivel casters
- Attractive lacquered zinc finish
- Ships unassembled

Model #	D x W (in)	D x W (mm)	Overall Height (in)	Overall Height (mm)
<b>FSR</b>	22 x 50 1/2	559 x 1283	56 – 66	1422 x 1676



### Replenishment Rack

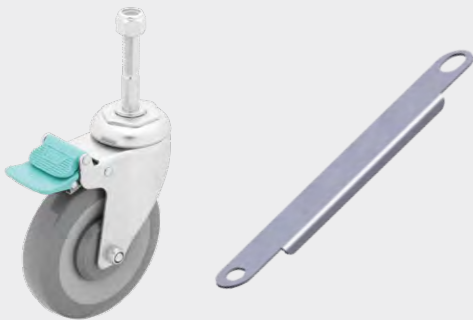
Fast and efficient replenishment during peak periods and for urgent needs. Ideal for processing, transport, and replenishment of hung, folded and flat goods.

**Features:**

- Floor friendly-visual appeal
- Comes standard with three shelves with 1" lips to secure merchandise
- Acrylic liner on top shelf
- 5" Heavy-duty casters; two rigid
- Ends are enclosed
- Shown with optional drop leaf
- Attractive lacquered zinc finish
- Ships assembled or unassembled

Model #	D x W (in)	D x W (mm)	Overall Height (in)	Overall Height (mm)
<b>WRR-1842-69C</b>	18 x 42	457 x 1067	75	1905
<b>WRR-2442-69C</b>	24 x 42	610 x 1067	75	1905
<b>WRR-1848-69C</b>	18 x 48	457 x 1219	75	1905
<b>WRR-2448-69C</b>	24 x 48	610 x 1219	75	1905

### Product Options



#### Patented Directional Caster

IRSG's patented "Directional Caster" provides users with unmatched control, maneuverability and ease of use. This upgrade kit includes 1 locking directional caster with locking bar. Call IRSG for more information.

Model #	Rack Size
<b>CUSTOM</b>	18" Deep
<b>CUSTOM</b>	24" Deep



#### Folding Work Surface

IRSG's optional Laminated Folding Work Surface is ideal for processing and folding merchandise. The shelf folds away for easy storage when not in use.

Model #	Rack Size
<b>WS-SL20-18G-1</b>	18" Deep
<b>WS-SL20-G-1</b>	24" Deep

## Dual Hang Rail Rack – DHR-550

The DHR-550 Dual Hang-Rail Rack is designed to maximize the transport of hung, folded or boxed merchandise. Replenishment teams can load more garments and make fewer trips to the floor, resulting in increased productivity. The top and middle dual-rails will carry up to 4 times the quantity of hung goods as compared to a standard rack. The patented Directional caster facilitates ease of movement. The optional Folding Bottom Shelf increases functionality, by increasing the capacity to transport boxed or folded goods.

### Features:

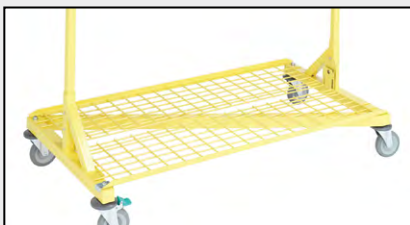
- 57”L x 30”W x 74”H
- Comes standard with chrome top and middle dual hang-rails
- 2” Square tube steel base
- 5” Non-marring casters; (1 directional, 3 swivel)
- 4” Rotating, non-marring bumpers
- Units nest when not in use
- Safety yellow base and uprights
- Load capacity – up to 1,000 lbs.
- Ships assembled



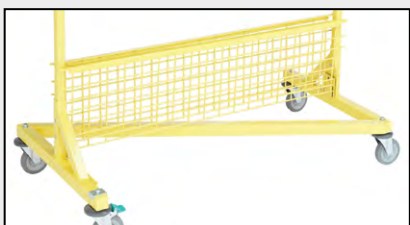
**DHR-550G:** w/ Optional Bottom Shelf

Model #	D x W (in)	D x W (mm)	Overall Height (in)	Overall Height (mm)	Description
<b>DHR-550</b>	30 x 57	762 x 1448	74	1880	Standard Rack – Chrome Top & middle dual hang-rails, (1) Directional, (3) Swivel Casters
<b>DHR-550T</b>	30 x 57	762 x 1448	74	1880	Includes one (1) Directional, (1) total lock (2) Swivel Casters
<b>DHR-550G</b>	30 x 57	762 x 1448	74	1880	Includes middle wire-grid shelf (1) Directional, (3) Swivel Casters
<b>DHR-550GT</b>	30 x 57	762 x 1448	74	1880	Includes middle wire-grid shelf, one (1) Directional, (1) total lock (2) Swivel Casters

## Product Options



**DHR-S**



**DHR-S:** in “Fold-Up” Position



**DHR-550:** w/ Optional Bottom Shelf

### Folding Bottom Shelf

#### DHR-S

For the DHR-550 Series of Dual Hang-Rail Racks, the DHR-S Folding Bottom Shelf facilitates transport of bulk or folded goods. Heavy wire-grid construction limits dust collection. Folds up for nesting.



**Z-Racks - RGR Series**

The RGR Series of rolling garment “Z” Racks deliver ease of use, ERGOnomic safety, and long life with the best value on the market. Super heavy-duty construction combined with high-performance 5” non-marring casters (2 swivel/ 2 brake) provide up to a 1,000 lb. total load rating – 2 times the capacity of most other models. “Z” base allows for nesting when not in use. Choose from 4’ or 5’ lengths and “safety” yellow or black powder coat bases. Options include middle bar, folding bottom shelf, and 4” non-marring, rotating bumpers.

**Features:**

- Heavy-duty 14-gauge steel
- 1 1/2” Square steel tube base
- Welded gussets at Z base corners for added strength
- Zinc uprights, hang rail
- Load capacity – up to 1,000 lbs.

**RGR2-350 Series**



**RGR2-350:** with Yellow Base



**RGR2-350-B:** Black Base w/ Optional Middle Bar

**RGR2-350 Series**

The RGR2-350 rolling garment Z-Rack delivers ease of use, safety, and long life. Super heavy-duty construction combined with standard 5” non-marring casters (2 swivel/ 2 brake) provides a 1,000 lb. total load capacity. Z-Base allows for nesting when not in use.

**Features:**

- 48”L x 24”W x 72”H
- Hang rail constructed of 14-gauge steel
- 1 1/2” Square steel tubing base
- Lacquered zinc uprights and hang rails
- Welded gussets at Z base corners for added strength
- Load capacity – up to 1,000 lbs.
- Ships unassembled
- Designed for easy assembly

Model #	D x W (in)	D x W (mm)	Overall Height (in)	Overall Height (mm)	Description
<b>RGR2-350</b>	24 x 48	610 x 1219	72	1829	4’ Z Rack w/ Yellow Base
<b>RGR2-350-B</b>	24 x 48	610 x 1219	72	1829	4’ Z Rack w/ Black Base



**RGR2-550:**  
With Optional Middle Bar



**RGR2-550-B:**  
With Optional Bottom Shelf

## RGR2-550 Series

This super heavy-duty rack is specifically designed for the rigors of retail. The 5" non-marring casters (2 swivel/2 brake) bolt through the frame and allow for a 1,000 lb. Load capacity. The Z Base allows for nesting when not in use. Full size 5' length maximizes hung goods capacity.

### Features:

- 62 1/4" L x 24" W x 72" H
- Hang rail constructed of 14-gauge steel
- Welded gussets at Z base corners for added strength
- Load capacity – up to 1,000 lbs.
- Lacquered zinc uprights and hang rail
- Ships unassembled
- Designed for easy assembly

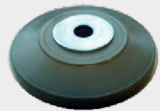
Model #	D x W (in)	D x W (mm)	Overall Height		Description
			(in)	(mm)	
<b>RGR2-550</b>	24 x 62 1/4	610 x 1581	72	1829	5' Z-Rack - Yellow Base
<b>RGR2-550-B</b>	24 x 62 1/2	610 x 1581	72	1829	5' Z-Rack – Black Base

## Product Options



### Directional Caster Upgrade – RGR-LDC

Upgrade one standard 5" swivel caster with IRSG's exclusive and patented Directional Caster. When engaged, the Directional Casters allow the rack to be guided with one hand and facilitate ease of movement on the retail floor. Note: Gray bumper shown is sold separately.



### Bumpers: RGR-B

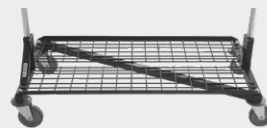
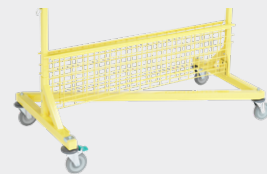
Rotating non-marring, 4" bumpers, set of 4. Use to protect doors, walls, fixtures and ankles!



### Middle Bar - RGR-M & RGR-M3

Double the capacity of hung goods with use of the middle bar. Lowers to base of Z Rack when not in use.

Model #	Description
<b>RGR-M3</b>	Middle Bar for RGR2-350
<b>RGR-M</b>	Middle Bar for RGR2-550



### Folding Bottom Shelf

Sturdy wire-grid shelf is ideal for transporting flat/bulk goods. Folds up when not in use to allow for nesting.

Model #	Description
<b>RGR-S3</b>	Yellow Shelf for RGR2-350
<b>RGR-S3-B</b>	Black Shelf for RGR2-350-B
<b>RGR-S</b>	Yellow Shelf for RGR2-550
<b>RGR-S-B</b>	Black Shelf for RGR2-550-B



**Nesting Transporters**

NT-48 & NT-60

These versatile, high-capacity, three-sided transporters are designed to move large amounts of merchandise during replenishment. Shelves fold up to allow transporting of larger items, while our directional caster allow for easy steering. When the work is done the NT-48, and the larger NT-60, fold and nest, saving valuable space in the backroom. Six units can nest in 5' saving valuable backroom space.

**Features:**

- NT-48: 48"W x 59"H x 28"D
- NT-60: 60"W x 59"H x 28"D
- Heavy-duty reinforced steel frame
- 5" Non-marring caster (1-directional, 1-total-lock and 2-swivel)
- Load capacity – up to 1,000 lbs.
- Versatile – shelves fold up to accommodate all sizes of cargo
- Durable powder coat finish
- Ships assembled
- 6" caster upgrade is available, contact IRSG for more information



**NT-48:** in Standard 3 Shelf Configuration



**NT-48:** Shown with top shelf up



**NT-48:** with both shelves up

Model #	D x W (in)	D x W (mm)	Overall Height (in) (mm)	
<b>NT-48</b>	28 x 48	711 x 1219	59	1499
<b>NT-60</b>	28 x 60	711 x 1524	59	1499



Three nested transporters



## Bulk Nesting Transporters

IRSG's signature Bulk Nesting Transporter is the result of a customized product that has become the cornerstone of inventory transport solutions. The NTM features 3 collapsible shelves that are slightly slanted toward the back of the cart to keep merchandise securely in place. This multi-function cart can be used with the shelves locked in different positions to accommodate a variety of merchandise. The transporter is built on a reinforced steel Z base frame which allows empty units to nest together to save storage space.

### Features:

- (3) collapsible shelves
- 5" non-marring heavy duty casters – (1) swivel, (1) locking directional & (2) total lock
- Heavy duty steel frame
- Durable powder coat finish
- Ships assembled
- 27"D x 51"L x 65 3/4"H

## Product Options



### NTM2-48

Nesting Transporter. Optional 6" Yellow Bumpers Available



### NTM2-48-GHR

Nesting Transporter with 2 Garment Hang Rails



### NTM2-48-GHR-B6

Nesting Transporter with 2 Garment Hang Rails and 6" Yellow Bumpers



### Nesting Wire Transporters

IRSG Nesting Wire Transporters are ideal for receiving, transporting and replenishment. Multi-functional and designed to save space and time. Choose from a variety of sizes and options to meet your specific needs.

**Features:**

- Lacquered zinc finish
- Patented “Directional Caster” available
- Load capacity – up to 1,000 lbs
- Comes with 5” non-marring casters
- Optional 4” rotating, non-marring bumpers
- Carts are available with standard or reverse mat shelves
- Ships assembled

Model #	D x W (in)	D x W (mm)	Overall Height (in)	Overall Height (mm)	# of Shelves	Style of Shelf
<b>NT-1848</b>	20 x 51 1/2	508 x 1308	70	1178	Four	Standard
<b>NT-1848R</b>	20 x 51 1/2	508 x 1308	70	1178	Four	Reverse Mat
<b>NT-2442Z3</b>	24 x 45 1/2	610 x 1156	56	1422	Three	Standard
<b>NT-2448</b>	24 x 51 1/2	610 x 1308	70	1178	Four	Standard
<b>NT-2448R</b>	24 x 51 1/2	610 x 1308	70	1178	Four	Reverse Mat
<b>NT-2460</b>	24 x 63 1/2	610 x 1607	70	1178	Four	Standard



**Bumpers: NT-B**  
Rotating Non-Marring 4” Bumpers. Use to protect doors, walls and fixtures. Set of four.



**NT-1848:**  
Standard 4 Shelf Cart



**NT-1848R:**  
Reverse Mat 4-Shelf Cart shown at a 30-degree tilt



**NT-2442Z3:**  
Standard 3-Shelf Cart



**NT-2448:**  
Standard 4 Shelf Cart

**Sign Carts**

Versatile and durable, these carts can be used for a number of tasks and projects. Available in a wide variety of configurations and sure to become an indispensable tool for your sales floor operations.



**SGC-1836-003**

- 18 1/4"W x 36 1/2 "L x 36 1/4"H
- 18"W x 36"L work surface
- 2 reverse mat shelves
- 4 bins w/ adjustable dividers
- Step stool hook
- Pen/pencil holder
- 3 ring binder holder
- 5" non-marring swivel casters, one locking
- 3" rotating non-marring bumpers
- Lacquered zinc finish w/ gray laminate top
- Ships assembled



**SGC-1836-30LZ**

- 18"W x 41"L x 49"H
- 18"W x 36"L x 36"H work surface
- 2 glide-out bins w/ adjustable dividers
- Label roll bar
- Large signage storage area
- 5" non-marring casters
- 3" rotating non-marring bumpers
- Lacquered zinc finish w/ gray laminate top
- Ships assembled



**SGC-2448-33LZ**

- 24"W x 53"L x 39"H
- 24"W x 30"L work surface
- 5 bins w/ adjustable dividers
- 5" non-marring casters w/ directional
- 3" rotating non-marring bumpers
- Lacquered zinc finish w/ gray laminate top
- Ships unassembled
- Easy to assemble



**SGC-2442-33LZ**

- 24"W x 48"L x 39"H
- 24"W x 42"L work surface
- 4 bins w/ adjustable dividers
- 5" non-marring casters
- Lacquered zinc finish w/ gray laminate top
- Ships unassembled
- Easy to assemble



**S4-2436-63LZF2-GXXX-1**

- 24"W x 36"L x 69"H
- 2 reverse mat shelves
- 2 standard shelves
- 1 acrylic shelf liner on bottom shelf
- 18 enclosure rods
- 8 bins 16" x 11" x 6"H
- 16 bin dividers 11" x 6"H
- Lacquered zinc finish
- Ships assembled



**SGC-2442-LS-1**

- 24"D x 48"L (including handle) x 69"H
- 3 Glide-out bins with adjustable dividers
- 3 wire shelves, each 24" x 42"L
- 6 bins, each 16" x 11" x 6"H
- Partitioned storage for medium & large signs
- Wire basket/handle holds large rolled posters
- Lacquered zinc finish
- Ships assembled

## Utility Carts

Durable, versatile and ERGOnomically designed, this series of carts is available in a number of configurations. Shelves can be spaced to meet your needs. Unlimited uses – great for merchandising and other handling tasks.

### Features:

- 5" Heavy-duty, non-marring swivel casters
- 40" Overall height
- 33" Top shelf height
- Load capacity – up to 1,000 lbs
- Caster upgrade kits available
- Lacquered zinc finish
- Accessories available
- Ships unassembled



Standard Two Shelf Utility Cart.  
Shown with optional 3" Bumpers

### 2-Shelf Utility Carts - 40" High

Model #	D x W (in)	D x W (mm)
<b>UC2-1824LZ</b>	18 x 24	457 x 610
<b>UC2-1830LZ</b>	18 x 30	457 x 760
<b>UC2-1836LZ</b>	18 x 36	457 x 914
<b>UC2-1842LZ</b>	18 x 42	457 x 1067
<b>UC2-1848LZ</b>	18 x 48	457 x 1219
<b>UC2-2136LZ</b>	21 x 36	530 x 914
<b>UC2-2142LZ</b>	21 x 42	530 x 1067
<b>UC2-2436LZ</b>	24 x 36	610 x 914
<b>UC2-2442LZ</b>	24 x 42	610 x 1067
<b>UC2-2448LZ</b>	24 x 48	610 x 1219



Standard Three-Shelf Utility Cart.  
Shown with optional 3" Bumpers

### 3-Shelf Utility Carts - 40" High

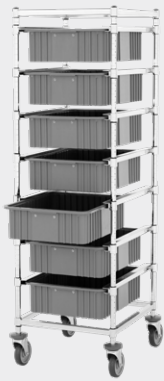
Model #	D x W (in)	D x W (mm)
<b>UC3-1824LZ</b>	18 x 24	457 x 610
<b>UC3-1830LZ</b>	18 x 30	457 x 760
<b>UC3-1836LZ</b>	18 x 36	457 x 914
<b>UC3-1842LZ</b>	18 x 42	457 x 1067
<b>UC3-1848LZ</b>	18 x 48	457 x 1219
<b>UC3-2136LZ</b>	21 x 36	530 x 914
<b>UC3-2142LZ</b>	21 x 42	530 x 1067
<b>UC3-2436LZ</b>	24 x 36	610 x 914
<b>UC3-2442LZ</b>	24 x 42	610 x 1067
<b>UC3-2448LZ</b>	24 x 48	610 x 1219

## Product Options

### C-B3-K4

Set of four 3" Non-marring, rotating bumper. Use to protect doors, walls and fixtures.





**KC1-2421-63C:** Single Bin Cart with gray 17"W x 22"L x 6"H bins (bins sold separately)



**KC2-2442-63C:** Double Bin Cart with optional 24" x 24" shelves (bins sold separately)



**KC3-2460-63C:** Triple Bin Cart with optional 24" x 24" shelves (bins sold separately)

## Bin Carts

Bin Carts are ideal for the storage and transport of bulk items. Combine shelves for larger items. These versatile carts come in single, double and triple bay configurations. Totes and shelves are sold separately. Bins are sold separately and are available in a variety of sizes. The number of bins and size of bins must be specified to configure cart.

### Features:

- 5" Swivel casters with polyurethane tread
- Overall height 69"
- 3" Non-marring bumpers
- Lacquered zinc finish
- Additional slides available – listed below
- Optional bin dividers (for inside each bin) and wire grid shelves are sold separately
- Ships assembled

### Single Bay

Cart includes (4) 63" posts, support frame, (14) single slides, end-stops, (4) 3" non-marring bumpers, and (4) 5" swivel casters. Bins and shelves sold separately.

Part #	D x W (in)	D x W (mm)	Overall Height (in)	Overall Height (mm)	# of single slides
<b>KC1-2421-63C</b>	24 x 21	533 x 610	68	1753	14

### Double Bay

Cart includes (4) 63" posts, support frame, (6) single slides, end-stops, (3) double slides, (4) 3" non-marring bumpers, and (4) 5" swivel casters. Bins and shelves sold separately.

Part #	D x W (in)	D x W (mm)	Overall Height (in)	Overall Height (mm)	# of single slides	# of double slides
<b>KC2-2442-63C</b>	24 x 42	610 x 1067	68	1727	6	3

### Triple Bay

Cart includes (4) 63" posts, support frame, (6) single slides, (6) double slides, end-stops, (4) 3" non-marring bumpers, and (4) 5" swivel casters. Bins and shelves sold separately.

Part #	D x W (in)	D x W (mm)	Overall Height (in)	Overall Height (mm)	# of single slides	# of double slides	Casters
<b>KC3-2460-63C</b>	24 x 60	610 x 1524	68	1727	6	6	12 - 24"

## Product Options

### Extra Slides

Part #	Description
<b>KCS1</b>	<b>Single Slide</b>
<b>KCS2</b>	<b>Double Slide</b>
<b>KCS-ES</b>	<b>End Stop for Single Slide</b>

End Stops are required when adding additional slides. One End-Stop required per slide.

**KCS1:**  
Single Slide



**KCS2:**  
Double Slide





**MC-4820**  
Standard 4-Shelf Cart with  
Standard Grid Shelves & Base



**MC-4820S**  
With Solid Shelves & Base

### MC-4820 Stocking Carts

The MC-4820 the larger-sized, yet “floor-friendly” cart is ideal for replenishment. Choose from either wire-grid, or solid shelves. Durable non-marring casters including one patented directional caster are standard. Options include Folding Work Surface and Back-Panel Kits.

**Features:**

- 53”L (including handle) x 20”W x 62”H
- 5” Non-marring casters
- One locking directional caster
- Load capacity – up to 1,000 lbs.
- Corner bumpers included
- Solid steel frame
- Durable powder coat finish
- Ships assembled

Model #	D x W (in)	D x W (mm)	Overall Height (in)	Overall Height (mm)	Description
<b>MC-4820</b>	20 x 53	508 x 1347	62	1575	4 Shelf, Wire-Grid
<b>MC-4820S</b>	20 x 53	508 x 1347	62	1575	4 Shelf, Solid

### Accessories

**MC-SL20-G:**  
Folding Work Surface



**MC-BP48:**  
Back Panel Kit



## MC-3618 Stocking Carts

The MC-3618 cart is ideal for applications requiring a smaller footprint. Designed for ease of use and long life. Small enough to be used during store hours without blocking aisles. This durable cart is excellent for restocking, merchandise/material transport and replenishment. Choose from either a standard wire-grid, 3" recessed wire-grid, or solid shelves. Durable non-marring casters, including one patented Directional Caster, are standard. Optional Folding Work Surface is available.

### Features:

- 41"L (including handle) x 18"W x 39"H
- 4" Non-marring casters w/ one Locking Directional Caster
- Load capacity – up to 500 lbs.
- Patented Directional Caster for easy maneuverability
- Corner bumpers
- Solid steel frame
- Durable powder coat finish
- Ships unassembled

Model #	D x W (in)	D x W (mm)	Overall Height		Description
			(in)	(mm)	
<b>MC-3618-S3</b>	18 x 41	457 x 1041	39	991	3 Wire-Grid Shelves
<b>MC-3618L-S3</b>	18 x 41	457 x 1041	39	991	3 Recessed Wire-Grid Shelves
<b>MC-3618S-S3</b>	18 x 41	457 x 1041	39	991	3 Solid Shelves



**MC-3618-S3**  
3 Wire Grid Shelves

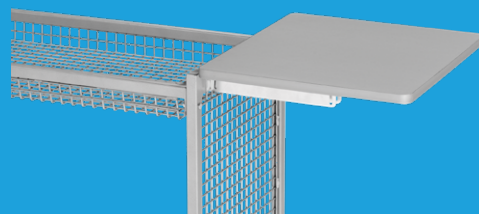


**MC-3618L-S3**  
3 Recessed Wire Grid Shelves



**MC-3618S-S3**  
3 Solid Shelves

## Accessories



**MC-SL20-G**  
Folding Work Surface

## MC-4218 Stocking Carts

The MC-4218 is a heavy-duty, all purpose cart for any use. Ideal for restocking, replenishment and merchandise/material transport. Choose from either wire-grid, 3" recessed wire-grid, or solid shelves. Durable non-marring casters, including one patented Directional Caster, are standard. Options include Folding Work Surface and Back Panel Kits.

**Features:**

- 47"L (including handle) x 18"W x 39"H
- 4" Non-marring casters w/ one Locking Directional Caster
- Load capacity – up to 500 lbs.
- Directional Caster included for easy maneuverability
- Corner bumpers included
- Solid steel frame
- Durable powder coat finish
- Ships unassembled

Model #	D x W (in)	D x W (mm)	Overall Height (in)	Overall Height (mm)	Description
<b>MC-4218-S3</b>	18 x 47	457 x 1194	41	1041	3 Wire-Grid Shelves
<b>MC-4218L-S3</b>	18 x 47	457 x 1194	41	1041	3 Recessed Wire-Grid Shelves
<b>MC-4218S-S3</b>	18 x 47	457 x 1194	41	1041	3 Solid Shelves



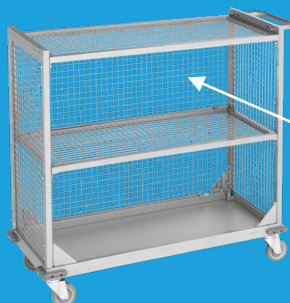
**MC-4218-S3**  
3 Wire Grid Shelves



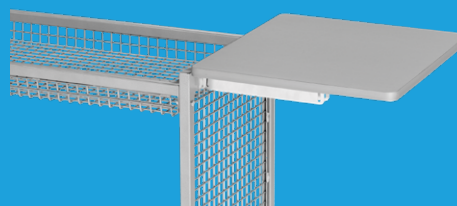
**MC-4218L-S3**  
3 Recessed Wire Grid Shelves



**MC-4218S-S3**  
3 Solid Shelves



**MC-BP42**  
Back Panel Kit



**MC-SL20-G**  
Folding Work Surface

## Accessories



## E-Commerce Order Picking Cart

S3-2124-69LZF2-SHOP-1

Increase the efficiency of picking online orders with E-Commerce Carts. There is space for hung goods, large divider bins for small items, and a shelf for folded merchandise. Once picked, you can transport the cart to the backroom for packing and shipping. Available in a variety of configurations. Ships unassembled.

### Features:

- 21" x 24" x 75"
- 24" hang rail
- (1) 21" x 24" lacquered zinc shelf
- (2) 21" x 24" reverse mat lacquered zinc shelves
- (1) Notebook holder
- (2) 22" x 17" x 8" gray bins
- (2) 17" x 8" bin dividers & (2) 22" x 8" bin dividers
- (1) Set of 5" casters – 2 swivel/2 brake
- Ships unassembled

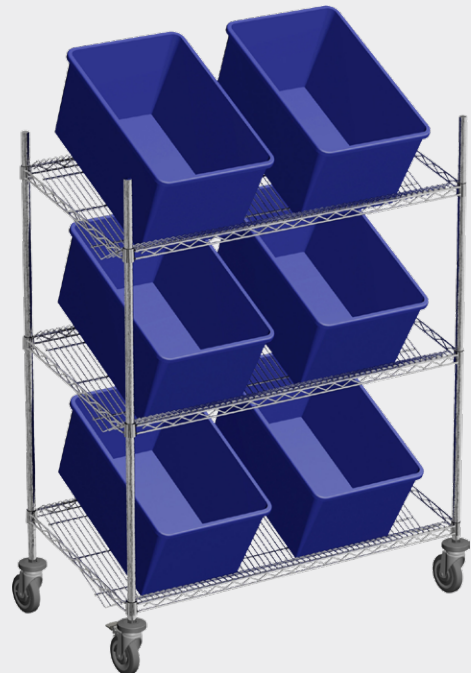
## Sorting Cart

S3-S2448LZ-001

IRSG's Sorting Cart is the perfect economic solution for organizing your products in storage bins or totes. This cart increases productivity, while reducing repetitive strain and other workplace injuries. It allows bins full of merchandise to be efficiently processed, organized, and transported to the sales floor.

### Features:

- 24"D x 48"L x 60" H
- 3 slanted shelves
- 4 posts
- 5" casters - 2 swivel/2 brake
- 3" bumpers
- Lacquered zinc finish
- Note: Shown bins are not included or sold by IRSG
- Ships unassembled





### E-Commerce Order Picking Cart

S6-1848-NXXX-1

Increase efficiency at picking E-Commerce orders on the sales floor with this cart. It allows plenty of space for hung, folded, boxed, and loose items which can be easily transported to the backroom or warehouse for packing and shipping to customers. Available in a wide variety of configurations to meet your needs. Ships assembled.

**Features:**

- 18" x 48" x 78"
- 24" hang rail
- (4) 18" x 24" lacquered zinc reverse mat wire shelves
- (1) 18" x 48" lacquered zinc wire shelf
- (1) 18" x 48" reverse mat lacquered zinc shelf
- (1) Set of 5" casters – 2 swivel/2 brake
- (8) 16" x 10" x 4" blue bins
- Ships assembled

### Visual Carts

Versatile enough to simultaneously handle flat goods, cartons, and hung merchandise, the IRSG Visual Cart is a perfect complement to any store operations. Multi-tasking has never been easier than with this unique cart. The bright lacquered zinc finish complements sales floor décor, while 5" casters with rear locking bar make maneuvering the cart fast and easy.

**Features:**

- 2 – wire shelves with 1" lip
- 2 Removable baskets (1) 10" deep and (1) 7 1/2" deep
- One set of hanging file support rails
- Adjustable for letter and legal size hanging files capacity 75 files
- Four 5" non-marring swivel casters
- Shelf heights are custom adjustable in 1" increment
- Handle for ease of maneuvering
- Telescoping arm – use for hangers and hung goods while processing (retracts when not in use)
- Lacquered zinc finish
- Load capacity: up to 300 lbs.
- Shipped unassembled



Model #	D x W (in)	D x W (mm)	Overall Height (in)	Overall Height (mm)
<b>VSC-1836C-1</b>	18 x 36	457 x 914	41	1041



### Inventory Transfer Cart

Enclosed on three sides, this cart is ideal for safe and secure transport of boxed, bulk, or folded merchandise. Handle adds additional maneuverability for ease of steering through narrow aisles.

**Features:**

- Comes standard with two wire shelves
- Height: 60"
- Heavy-duty enclosure panels on three sides
- 5" Heavy-duty casters, 1 locking directional, 1 total-lock
- 3" Rotating bumpers
- Lacquered zinc finish
- Ships unassembled

Model #	D x W (in)	D x W (mm)	Overall Height (in) (mm)	
<b>ITC-1848-54LZ</b>	18 x 48	457 x 1219	60	1524
<b>ITC-2448-54LZ</b>	24 x 48	610 x 1219	60	1524
<b>ITC-2460-54LZ</b>	24 x 60	610 x 1524	60	1524

### Transfer Carts

Our versatile, lightweight transfer cart features an open design for visually assessing contents and side enclosure panels for secure transporting. Standard configuration consists of two (2) wire shelves, one (1) solid shelf, two (2) side enclosure panels, chrome plated dolly frame with wrap-around bumpers, and 6" casters (two swivel and two locking).

**Features:**

- Transfer carts can be configured to meet special requirements. By adding and removing accessories, a number of combinations can be made to customize a transfer carts.
- Open-Wire Construction promotes air circulation, which minimizes dust and dirt accumulation
- Posts are numbered on vertical 1" increments for fast and level assembly. Shelves are adjustable in 1" increments allowing for custom configurations
- Carts come standard with 6" polyurethane casters; two swivel and two locking
- Overall cart height is 69" with casters
- Lacquered zinc finish
- Ships assembled



Model #	D x W (in)	D x W (mm)	Post Height* (in) (mm)	
<b>CTC-2448-63LZ</b>	24 x 48	610 x 1219	63	1600

\* Overall cart height is 69" with casters.



### Replenishment Carts

Ideal for transport and replenishment of merchandise. Cart can serve as a convenient workstation for organizing product displays or can double as a sales fixture for clearance items. These carts are small enough to maneuver through narrow aisles, yet strong enough to support the heaviest load.

**Features:**

- Three shelves with 1" lip to keep merchandise secure
- Acrylic inserts on all three shelves - provides smooth surface
- 18"W x 42"L x 39"H footprint
- 5" heavy-duty casters; two rigid, two swivel
- 3" rotating bumpers
- 6" ledges on ends of bottom & middle shelves
- Handle for ease of maneuvering
- Lacquered zinc finish
- Can ship assembled or unassembled

Model #	D x W (in)	D x W (mm)	Overall Height (in) (mm)	
<b>CRC-1842-33LZ</b>	18 x 42	458 x 1067	39	910

### Processing Cart

Ideal for receiving and stocking of jewelry and other small, high-value merchandise. The compact size and attractive finish permits behind-the-counter use during store hours.

**Features:**

- Overall dimensions: 52"L (with table leaves open) x 19 5/8"W x 35" H
- Laminate work surface with dual drop leaves
- 4 - 18"W x 24"L. reverse mat wire shelves
- 5" swivel casters (non-marring), two with total-lock brake
- 3" bumpers (non-marring)
- Lacquered zinc finish with gray laminate top
- Ships assembled

Model #	D x W (in)	D x W (mm)	Overall Height (in) (mm)	
<b>JPC-1824LZ</b>	18 x 24	457 x 610	35	889



**JPC-1824C**

Shown with drop leaves extended

### Mini Replenishment Cart

These carts are ideal for storing inventory in your store's backroom, then transporting to the sales floor for replenishment. With it's small footprint, it can even be used while the store is open.

**Features:**

- (6) 18" x 24" 3" deep recessed shelves
- (6) Shelf liners
- 5" non-marring casters - 2 swivel/2 brake
- Ships unassembled

Model #	D x W (in)	D x W (mm)
<b>S6-R3-1824-001</b>	18 x 24	457 x 610



**S6-R3-1824-001**



### Mail Service Carts

The Mail Service Cart, with 2 wire baskets, is versatile to use for more than just mail. It's ideal for transporting signage for stores, merchandise, supplies, etc. It's a great multi-task cart that is easy to maneuver in tight spaces.

**Features:**

- (2) wire grid shelves with 1" lip
- (2) removable baskets (1) 10" deep and (1) 7 1/2" deep
- One set of hanging file support rails
- Adjustable for letter and legal size hanging files
- 5" Non-marring heavy duty swivel casters
- Handle for easy maneuvering
- Lacquered zinc finish
- Ships unassembled

Model #	Dimensions (in)
<b>MSC-1836C-1</b>	18"D x 36"L x 41"H

## Mobile Packing Station

MPS-R2436-K1

Mobile packing stations from IRSG allow for ease in packing internet orders in an efficient manner. These units are completely customizable to meet your specific needs..

### Features:

- MPS-R2436-K1: 24"D x 36"L x 39"H
- (1) Standard wire shelf
- (2) Wire shelves with 1" lip
- (1) 3" deep shelf
- (1) Gray shelf liner
- Bin rack with (4) 7"D x 4"W x 3"H bins
- 5" Non-marring heavy duty casters – 2 swivel/2 brake
- Ships unassembled



## Mobile Packing Station

MPS-R2448-K1

Mobile packing stations from IRSG allow for ease in packing internet orders in an efficient manner. These units are completely customizable to meet your specific needs..

### Features:

- MPS-R2448-K1: 24"D x 48"L x 39"H
- (1) Standard wire shelf
- (2) Wire shelves with 1" lip
- (1) 3" deep shelf
- (1) Gray shelf liner
- Bin rack with 2 blue bins with dividers: 11"D x 11"W x 5"H
- 5" Non-marring heavy duty casters – 2 swivel/2 brake
- Ships unassembled

## Dolly Base Wire Carts

This heavy-duty cart features durability and stability for those demanding mobile applications. Open wire construction allows easy access while the dolly base ensures maximum performance.

### Features:

- Cart consists of 4 posts, 4 shelves, chrome plated dolly with wrap-around bumper
- 6" Casters, two swivel and two total lock
- Available in posts heights 63" and 74"
- Posts are numbered on vertical 1" increments for fast and level assembly. Shelves are adjustable in 1" increments allowing for custom configurations
- Lacquered zinc finish
- Easy to assembly (no special tools required)
- Ships unassembled saving on freight costs



D x W (in)	D x W (mm)	Models w/ 63" Posts	Models w/ 74" Posts
		Overall height is 69" Model #	Overall height is 80" Model #
18 x 36	457 x 914	<b>SS-DB1836-63LZF</b>	<b>SS-DB1836-74LZF</b>
18 x 48	457 x 1219	<b>SS-DB1848-63LZF</b>	<b>SS-DB1848-74LZF</b>
18 x 60	457 x 1524	<b>SS-DB1860-63LZF</b>	<b>SS-DB1860-74LZF</b>
24 x 36	610 x 914	<b>SS-DB2436-63LZF</b>	<b>SS-DB2436-74LZF</b>
24 x 48	610 x 1219	<b>SS-DB2448-63LZF</b>	<b>SS-DB2448-74LZF</b>
24 x 60	610 x 1524	<b>SS-DB2460-63LZF</b>	<b>SS-DB2460-74LZF</b>

## Small Mobile Wire Cart

Manage footwear inventory safely and efficiently with the IRSG Small Mobile Wire Cart. Designed to negotiate narrow aisles, this cart is ideal for receiving, stocking and put-back.

### Features:

- Narrow 21" x 24" footprint
- Shelf spacing adjustable in 1" increments
- 5" Non-marring swivel casters
- Open wire design limits dust collection
- No tools required
- Ships unassembled

Model #	D x W (in)	D x W (mm)	Overall Height (in) (mm)	
<b>SS-2124-74LZF</b>	21 x 24	534 x 610	80	2032



## Linen Carts

With easy maneuverability, durable construction, and an open-air design, our linen truck is the perfect choice for your operations team. Allows quick visual review of contents and maximum air circulation.

- **Versatility:** We offer two different linen carts; standard-duty model includes (4) wire and (1) solid shelf. Heavy-duty model includes (4) wire, (1) solid shelf mounted on heavy steel dolly base. Both models include side and back enclosure panels.
- **Flexibility:** Linen cart can be customized to meet specific requirements by adding or removing shelves, side or back panels.
- **Mobility:** Standard-duty model includes 5" swivel casters, two with total lock (friction stem style). Heavy-Duty model includes 6" swivel casters, two with total lock (plate mount style).
- **Load capacity:** 1,000 lbs per cart
- **Adjustable:** Shelf heights are custom adjustable in 1" increments\*
- **Lacquered zinc finish**
- **NSF Listed**
- **Can ship assembled or unassembled**
- **Optional shelves are sold separately**

Model #	D x W (in)	D x W (mm)	Overall Height (in)	Overall Height (mm)	Description
<b>LC-2460LZ</b>	24 x 60	610 x 1524	69	1753	Standard Duty, Mobile Linen Cart
<b>LCH-2460LZ</b>	24 x 60	610 x 1524	71.5	1816	Heavy-Duty, Mobile Linen Cart



## Stocking Cart

### SC-1649

IRSG Stocking Carts provide a great way to transport, store, and display goods such as large pictures, artwork, mirrors, etc. The design of the cart helps reduce breakage and damage to these fragile items, which reduces loss and increases sales. Stocking carts ship assembled.

#### Features:

- 16"D x 49"L x 42"H
- 5" Non-marring heavy duty casters – 2 swivel/2 brake
- Durable gray powder coat finish
- Ships assembled

## Wire Cart with Bins

S4-2124-54-NXXX-ASSY

Looking for a great cart to transport or store sensor tags and size dividers?  
Or a small cart to transport small, heavy merchandise to the sales floor?  
This cart is up to the task!

### Features:

- Narrow 21" x 24" footprint
- Overall height is 60", making the top shelf reachable
- Top Hang Bar to hold size dividers
- (4) 22" x 17" x 6" bins (Dividers for inside bins are sold separately, if needed)
- 5" Non-marring casters - 2 swivel/2 brake
- Ships assembled, but can ship unassembled if requested



## Merchandise Transfer Rack

Ideal for safe and secure transport of boxed, folded, or bulk merchandise.

### Features:

- Comes standard with - four 24"W x 48"L wire shelves
- Height: 60"
- Acrylic liners on bottom 3 shelves provides smooth solid surface
- 5" Heavy-duty casters, two rigid
- 4" Shelf ledge on back of three shelves holds merchandise on cart
- Ends of cart are enclosed to prevent merchandise from falling off cart
- Lacquered zinc handle for ease of maneuvering
- Optional: Patented Locking Directional Caster for easy maneuvering through narrow aisles
- Ships unassembled

Model #	D x W (in)	D x W (mm)	Overall Height (in)	Overall Height (mm)
MRC-2448-54C	24 x 48	610 x 1219	60	1524

### MRC-2448-54C

Optional "Patented" Locking Directional Caster



**DRR**  
Standard with 4 Adjustable Rails

## Dual Rail Rack DRR-36 Modular Rack

The shelves are standard with four (4) adjustable side rails and bottom basket. Add up to two (2) top baskets to create 3-tiers. Baskets nest in base when not in use.

**Features:**

- 16" W x 36"L x 55" H
- 3" Non-marring swivel casters
- Load capacity – up to 500 lbs
- Available in white or silver powder coat
- Ships unassembled

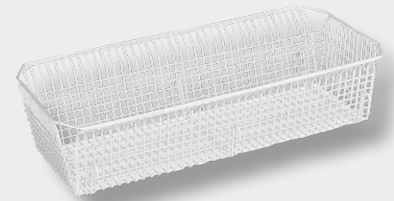
Model #	D x W (in)	D x W (mm)
<b>DRR-36</b>	17 x 36 x 55	432 x 914 x 1397



**DRR**  
Standard Using Top Rail



**DRR**  
With Optional 2 Top Baskets



**DRR-TB36**  
Optional DRR Top Basket

# WANT TO **LEARN MORE?**

Get in touch with our sales team for a **free quote** and to learn how our custom solutions can **maximize your retail space!**

[irsg.com](http://irsg.com) • 1-800-822-4264